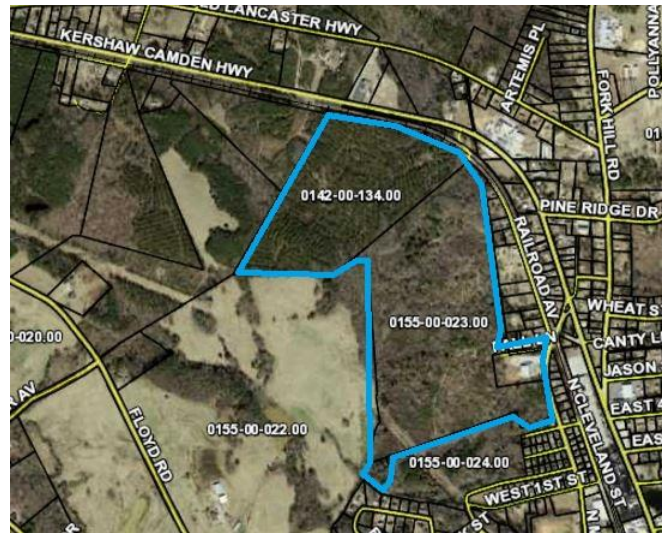


Town of Kershaw Industrial Park



The 127 acre industrial park is owned by the Town of Kershaw and is located on US 521. The Park has is served by the Lancaster and Chester (L&C) Railroad. The Kershaw Area has an outstanding manufacturing workforce and pro-business town council. Aggressive county incentives, including long-term property tax incentives, are available to new and expanding businesses locating at the Park.

Location	US 521 and Railroad Avenue Kershaw, SC
Price	\$10,000-\$20,000 per Acre
Size	127 Acres
Additional Acreage Available	Yes
Water	Lancaster County Water and Sewer District
Sewer	Town of Kershaw
Electricity	Duke Energy
Natural Gas	Lancaster County Natural Gas Authority
Fiber	Comporium Communications
Connectivity	
Highway	Hwy 521 (Frontage)
Interstate	I-20 (25 Miles) and I-77 (28 Miles)
Rail	L & C Railroad
Air	Charlotte Douglas International (65 Miles) McWhirter Field-General Aviation (22 miles)

Contact

Jamie Gilbert
Director of Economic Development
(803) 286-3633
jgilbert@lancastercountysc.net

